

PROJECT GENERAL NOTES

DRAWINGS ARE NOT TO BE SCALED. DIMENSIONS ARE PROVIDED TO INDICATE DESIGN INTENT ONLY.

THE GENERAL CONTRACTOR SHALL:

1). COORDINATE THE WORK OF ALL TRADES AND THE OWNER'S REQUIREMENTS FOR ALL WORK INDICATED IN THESE CONTRACT DOCUMENTS AND ASSUME FINAL RESPONSIBILITY FOR ALL CONSTRUCTION COORDINATION.

2). VERIFY ALL EXISTING CONDITIONS, DIMENSIONS, ETC. AT THE SITE. REPORT ANY DISCREPANCIES TO THE ARCHITECT IN WRITING PRIOR TO CONSTRUCTION. ANY SURFACES REQUIRING REPAIR FOR PROPER INSTALLATION OF NEW FINISHES MUST BE INCLUDED IN THE BASE BID. CONTRACTOR SHALL ALSO COORDINATE WORK WITH THE WORK OF OTHER TRADES.

3). SUBMISSION OF BID ACKNOWLEDGES THAT THE BIDDER HAS VISITED THE SITE AND IS SUFFICIENTLY FAMILIAR WITH ALL PERTINENT CONDITIONS FOR A RESPONSIVE AND MEANINGFUL BID.

4). BE RESPONSIBLE FOR ALL DEMOLITION AS REQUIRED FOR COMPLETION OF THE PROJECT. REMOVE ALL DEMOLISHED MATERIALS, NOT DESIGNED FOR REUSE, FROM THE PREMISES. EXISTING CONDITIONS DISTURBED BY REPAIR WORK SHALL BE PATCHED, REPAIRED, OR REPLACED TO MATCH EXISTING CONDITIONS & FINISHES TO A LIKE NEW CONDITION. REMOVE ALL DEBRIS FROM THE SITE & LEAVE THE PREMISES CLEAN, NEAT AND ORDERLY AT THE COMPLETION OF THE PROJECT.

5). CAP & IDENTIFY ALL ABANDONED EXISTING UTILITY PIPES AND CONDUITS PRIOR TO DEMOLITION IN ALL AREAS THROUGHOUT BUILDING.

6). PROVIDE PROPER PROTECTION FOR ALL EXISTING WORK, WINDOWS & DOORS, FURNITURE, MATERIALS, EQUIPMENT, AND FIXTURES WHICH ARE LIKELY TO BE DAMAGED DURING CONSTRUCTION.

7). CONTRACTOR IS RESPONSIBLE FOR MAINTAINING SECURITY OF THE BUILDING THROUGHOUT THE PROJECT TO FINAL COMPLETION. COORDINATE & COOPERATE WITH THE DISTRICT ON ALL SECURITY PROCEDURES.

8). PERFORM ALL WORK SHOWN ON THESE DRAWINGS UNLESS SPECIFICALLY NOTED OTHERWISE.

9). BE RESPONSIBLE FOR SCHEDULING AND COORDINATION OF ALL TRADES INCLUDING THOSE NOT DIRECTLY IN THEIR EMPLOY.

10). OBTAIN ALL PERMITS, INSPECTIONS AND CERTIFICATES NECESSARY FOR OCCUPANCY. TEMPORARY CERTIFICATE OF OCCUPANCY C. OF O. IS A PREREQUISITE FOR THE PUNCHLIST AND WARRANTY PERIOD TO COMMENCE.

11). INCLUDE COST OF PERMITS IN BID (UNLESS MODIFIED PER AGREEMENT). ALL WORK SHALL CONFORM TO THE REQUIREMENTS OF ALL APPLICABLE CODES, LAWS, RULES, AND REGULATIONS OF ALL CONSTITUTED AUTHORITIES HAVING JURISDICTION.

12). CONTRACTOR TO PREPARE COORDINATION DRAWINGS OF ALL TRADES PRIOR TO ORDERING ANY AND/OR ALL MATERIALS INCLUDING LEAD ITEMS.

13). NO CHANGE ORDERS WILL BE PERMITTED UNLESS SUBMITTED IN WRITING BY THE CONTRACTOR & APPROVED BY THE OWNER IN ADVANCE.

14). CONTRACTOR SHALL SUBMIT SHOP DRAWINGS OF ALL ITEMS, MATERIAL SAMPLES AND EQUIPMENT CUT-SHEET. SHOP DRAWINGS SHALL INCLUDE DETAILED FABRICATION AND ERECTION DRAWINGS, SETTING DRAWINGS, DIAGRAMMATIC DRAWINGS AND MATERIAL. ALL ITEMS SHALL BE CLEARLY INDICATED. FABRICATION SHALL BEGIN ONLY AFTER RECEIVING APPROVED SHOP DRAWINGS.

15). ALL NEW MATERIALS AND INSTALLATIONS SHALL BE IN ACCORDANCE WITH MANUFACTURER'S LATEST PRINTED SPECIFICATIONS AND CODE REQUIREMENTS.

16). DRAWINGS MAY NOT REPRESENT ALL EXISTING SITE CONDITIONS. CONTRACTOR IS RESPONSIBLE FOR FIELD VERIFICATION OF EXISTING CONDITIONS PRIOR TO ORDERING ANY MATERIALS OR PROCEEDING WITH THE WORK. CONTRACTOR TO NOTIFY ARCHITECT OF ANY DISCREPANCIES OR QUESTIONS AND OBTAIN REQUIRED CLARIFICATION PRIOR TO PROCEEDING WITH WORK. PROVIDE SHOP DRAWINGS PRIOR TO PLACING ORDER FOR ANY MATERIALS, DEVICES, & EQUIPMENT.

17). COORDINATE ON-SITE LOCATION & USAGE OF ALL DUMPSTERS AND STORAGE TRAILERS / CONTAINERS WITH DISTRICT BOE REPRESENTATIVE PRIOR TO DELIVERY. KEEP DUMPSTERS A MINIMUM OF 15'-0" FROM EXTERIOR FACE OF BUILDING.

18). COORDINATE SCHEDULE OF INSTALLATION WITH DISTRICT BOE REPRESENTATIVE PRIOR TO PROJECT COMMENCEMENT.

SYMBOLS

- DETAIL MARKER
DETAIL NUMBER
SHEET NUMBER
- SINGLE ELEVATION MARKER
ELEVATION NUMBER
SHEET NUMBER
- MULTI-ELEVATION MARKER
ELEVATION NUMBER
SHEET NUMBER
- SECTION MARKER
SECTION NUMBER
SHEET NUMBER
- CALL OUT BUBBLE
SECTION NUMBER
SHEET NUMBER
- REVISION MARKER
- DRAWING KEY NOTE

MAIN TITLE

NEW FIELD LIGHTING & SCOREBOARD
FOR
MORRIS SCHOOL DISTRICT AT:
**MORRISTOWN
HIGH SCHOOL**
50 EARLY STREET
MORRISTOWN, NJ 07960
BLOCK: 7901 LOT: 1
STATE PROJECT NUMBER : 27-3385-050-22-X000

PROJECT DESCRIPTION

IMPROVEMENTS:
NEW FIELD LIGHTING AND SCOREBOARD AT MORRISTOWN HIGH SCHOOL.

CODE DATA

NJUCC: NEW JERSEY UNIFORM CONSTRUCTION CODE; INTERNATIONAL BUILDING CODE 2018 NJ ED.

REHABILITATION CODE: RENOVATION NJAC 5:23-6

USE GROUP: E

TYPE OF CONST.: N/A

SPRINKLER N/A

AREA OF CONSTRUCTION: ±600 S.F.

ALL WORK SHALL CONFORM TO ALL RULES AND REGULATIONS OF THE MORRIS SCHOOL DISTRICT AND ALL GOVERNING AUTHORITIES HAVING JURISDICTION. THIS INCLUDES BUT IS NOT LIMITED TO : FIRE CODES, BUILDING AND CONSTRUCTION CODES, CONTROLLED INSPECTIONS, MATERIAL TESTING, LABOR LAW, AND ZONING AND HEALTH REGULATIONS.

LISTED BELOW ARE THE CURRENT ADOPTED CODES UNDER THE NEW JERSEY STATE UNIFORM CONSTRUCTION CODE (U.C.C.):

INTERNATIONAL BUILDING CODE –	
NEW JERSEY EDITION	2018
INTERNATIONAL MECHANICAL CODE	2018
ASHRAE 90.1	2016
THE NATIONAL ELECTRICAL CODE	2017
THE NATIONAL STANDARD PLUMBING CODE	2018
NJ REHAB CODE	NJAC 5:23-6
ANSI 117.1	2009
INTERNATIONAL FUEL GAS CODE	2018

ANY WORK WHICH DEVIATES FROM SUCH STANDARDS SHALL BE RECTIFIED TO THE SATISFACTION OF THE GOVERNING AUTHORITY. THE REQUIREMENTS OF GOVERNING AUTHORITIES SHALL SUPERSEDE THE DRAWINGS AND SPECIFICATIONS IN ALL CASES. THE ARCHITECT SHALL BE NOTIFIED BY WRITTEN CHANGE ORDER BEFORE SUCH WORK IS STARTED. NON-FAMILIARITY WITH GOVERNING RULES AND REGULATIONS SHALL NOT BE CAUSE FOR AN EXTRA CHARGE IN THE EVENT THAT WORK MUST BE REPLACED FOR NONCOMPLIANCE.

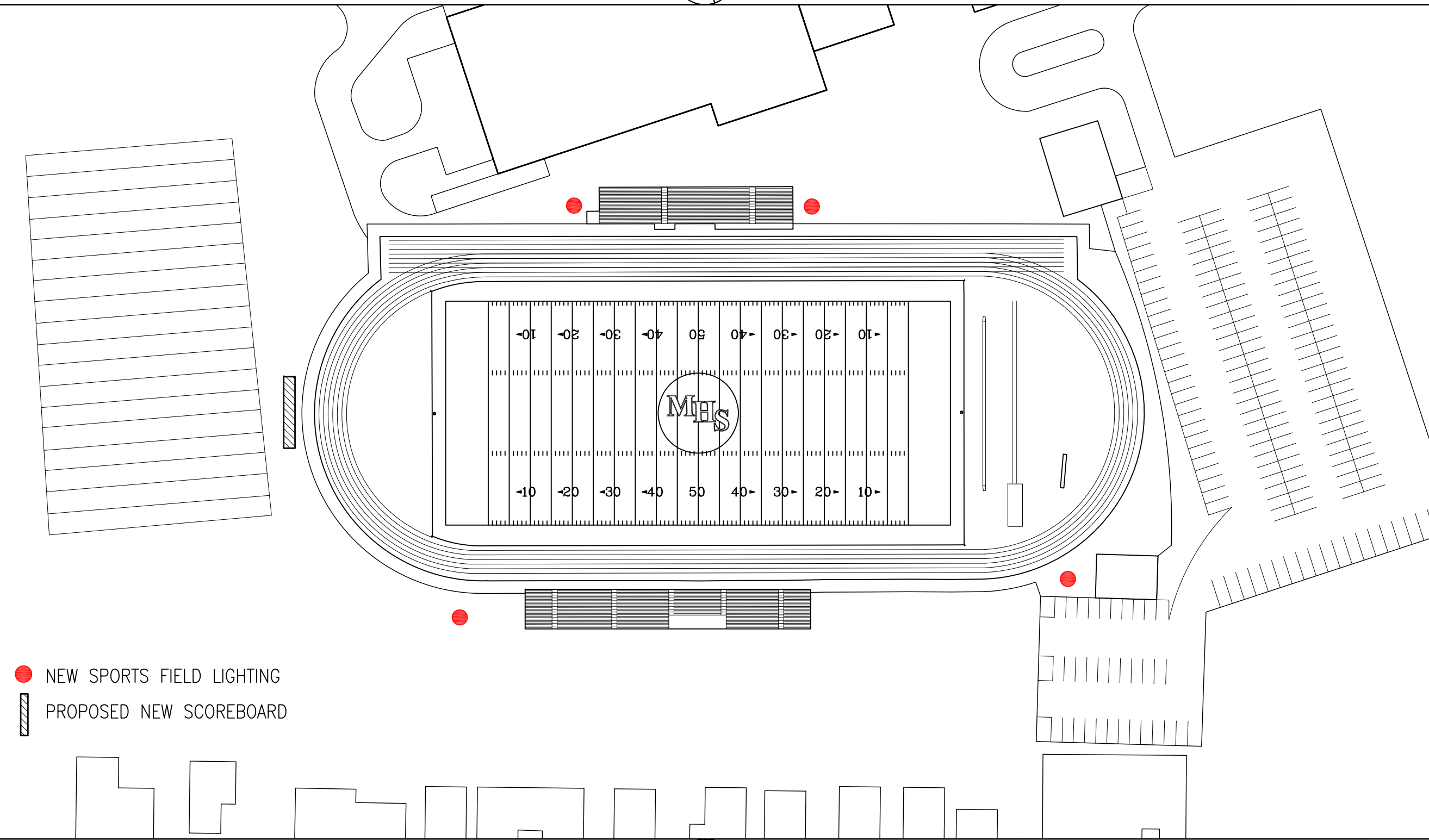
LIST OF DRAWINGS

- T1.00 TITLE SHEET
- CIVIL**
- LP-01 LIGHTING LEVEL PLAN
- LP-02 DETAILS

LOCATION PLAN



SCALE: N.T.S.



- NEW SPORTS FIELD LIGHTING
- PROPOSED NEW SCOREBOARD

AERIAL MAP



SCALE: N.T.S.



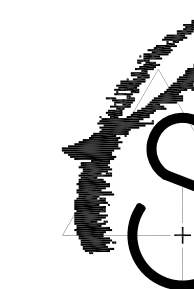
SITE: MORRISTOWN HIGH SCHOOL

AREA OF WORK:
FOOTBALL FIELD & SCOREBOARD

ABBREVIATIONS

- A.F.F. ABOVE FINISHED FLOOR
- ALUM. ALUMINUM
- BLDG. BUILDING
- CLG. CEILING
- CL. CENTERLINE
- COL. COLUMN
- CONC. CONCRETE
- EQ. EQUAL
- EXIST. EXISTING
- G.C. GENERAL CONTRACTOR
- M.O. MASONRY OPENING
- MAX. MAXIMUM
- MTL. METAL
- N.I.C. NOT IN CONTRACT
- N.T.S. NOT TO SCALE
- PTD. PAINTED
- R.O. ROUGH OPENING
- REQ'D. REQUIRED
- S.F. SQUARE FOOT (FEET)
- S.S. STAINLESS STEEL
- TYP. TYPICAL
- V.I.F. VERIFY IN FIELD

PARETTE
SOMJEN



ARCHITECTS
A LIMITED LIABILITY CORPORATION
CERT. NO. 21A00039800
439 Route 46 East
Rockaway, NJ 07866
Tel. 973-586-2400
Fax. 973-586-2401
www.planetPSA.com

NEW FIELD LIGHTING AND
SCOREBOARD FOR:
**MORRIS SCHOOL
DISTRICT**
MORRISTOWN HIGH SCHOOL
50 EARLY STREET
MORRISTOWN, NJ 07960
BLOCK: 7901 LOT: 1

STATE PROJ. NO. 27-3385-050-22-X000

REV	DATE	REMARK
0		
0	Marc R. Parette A.I.A.	
	NCARB Registration	44264
	New Jersey Architect	10436
	New York Architect	024312
	Pennsylvania Architect	0147988
	Maryland Architect	10445
	New Jersey Planner	4981
	Alabama Architect	5996
	Louisiana Architect	6261
	Florida Architect	AR 93121
	Michigan Architect	1301053053
	Nevada Architect	6311
0	Gregory J. Somjen A.I.A.	
	NCARB Registration	47178
	New Jersey Architect	13349
	Massachusetts Architect	9629
	Delaware Architect	4616
	Virginia Architect	0401 011210
	Connecticut Architect	8622
	New York Architect	03245-1
	Nevada Architect	6280
	District Of Columbia Architect	101294
0	David J. Didimamoff, A.I.A.	
	New Jersey Architect	21A101897500

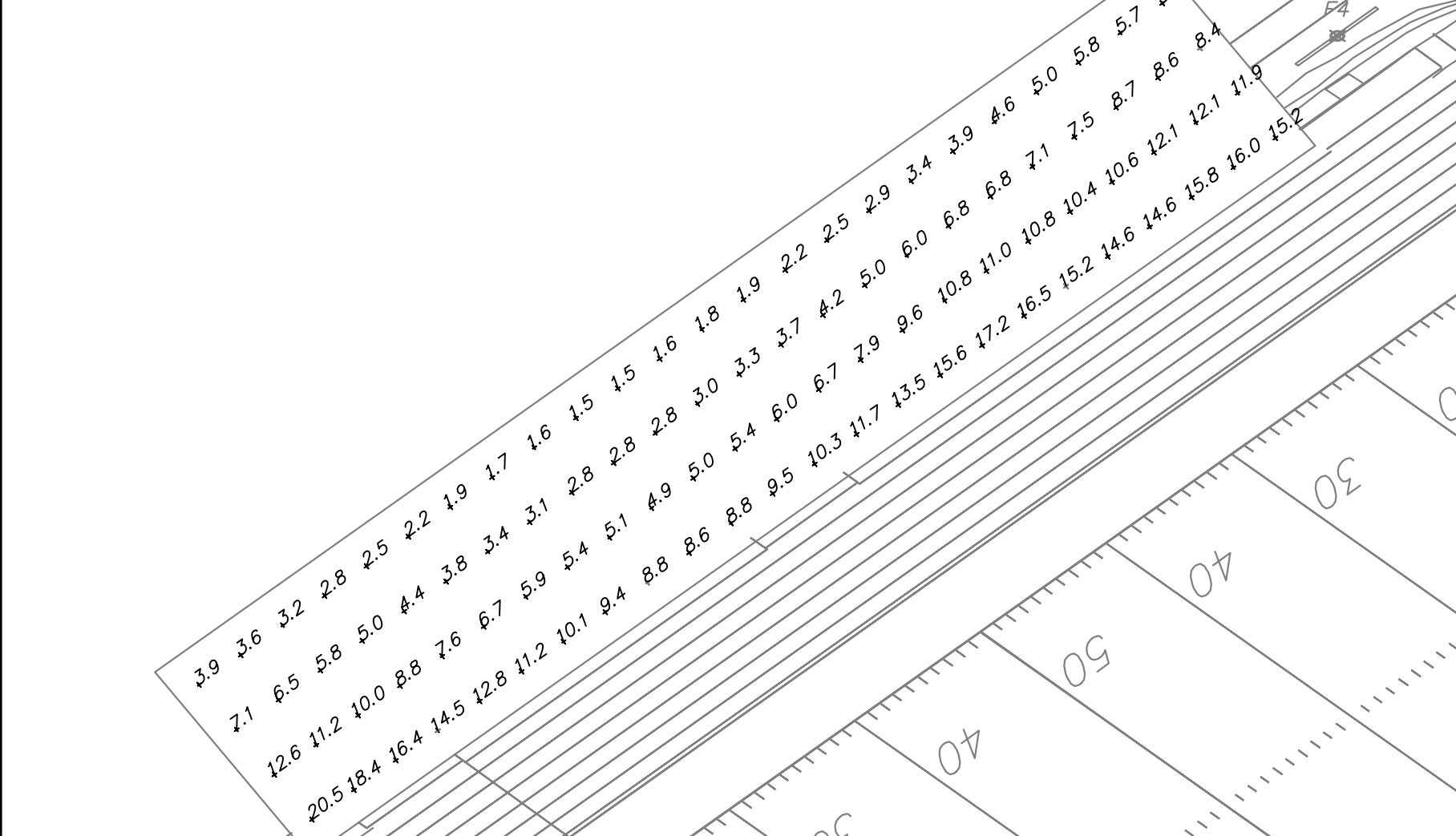
SIGNATURE

TITLE SHEET

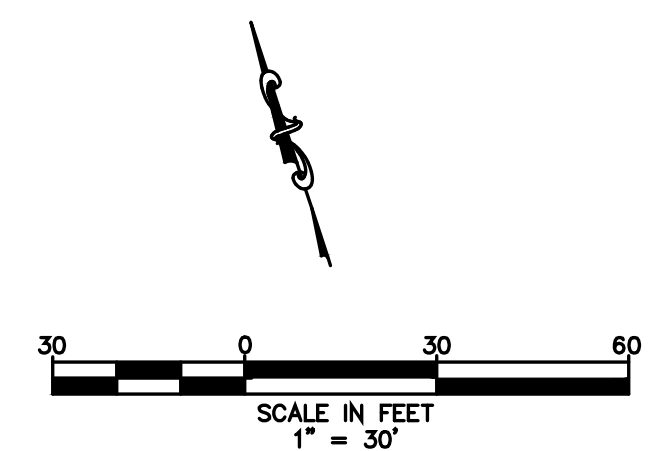
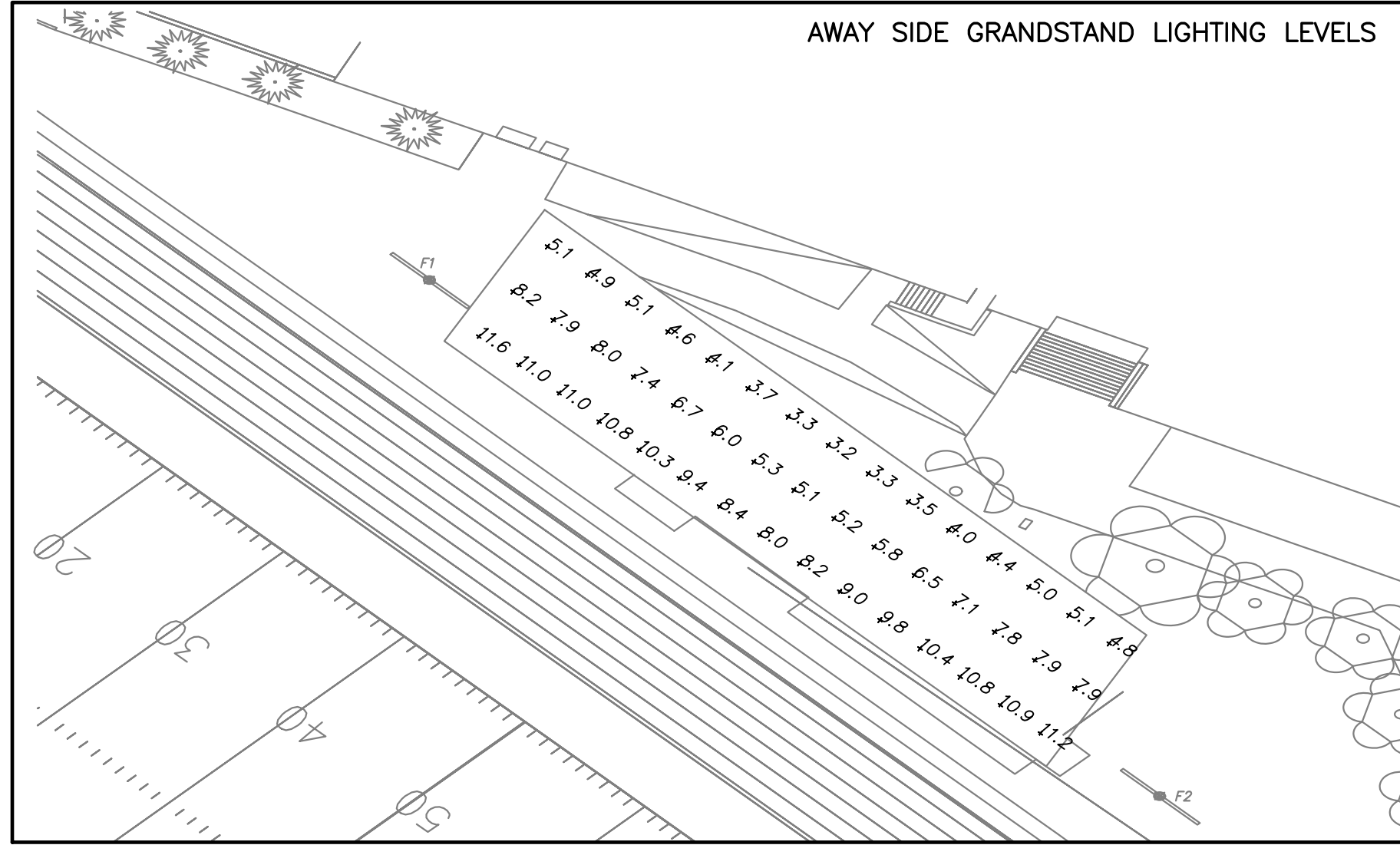
THE SCALE REPRESENTED ON THESE DRAWINGS IS ONLY VALID IF THE DRAWING IS 12" X 18". DRAWINGS WHICH ARE NOT PLOTTED AT THE SPECIFIED SHEET SIZE ARE NOT TO SCALE.

DD PROJECT MANAGER	SHEET NUMBER
MC DRAWN BY	T1.00
9038 PROJECT NUMBER	
16-JUNE-2022 RELEASE DATE	© COPYRIGHT 2022 PARETTE SOMJEN ARCHITECTS, L.L.C.

HOME SIDE GRANDSTAND LIGHTING LEVELS



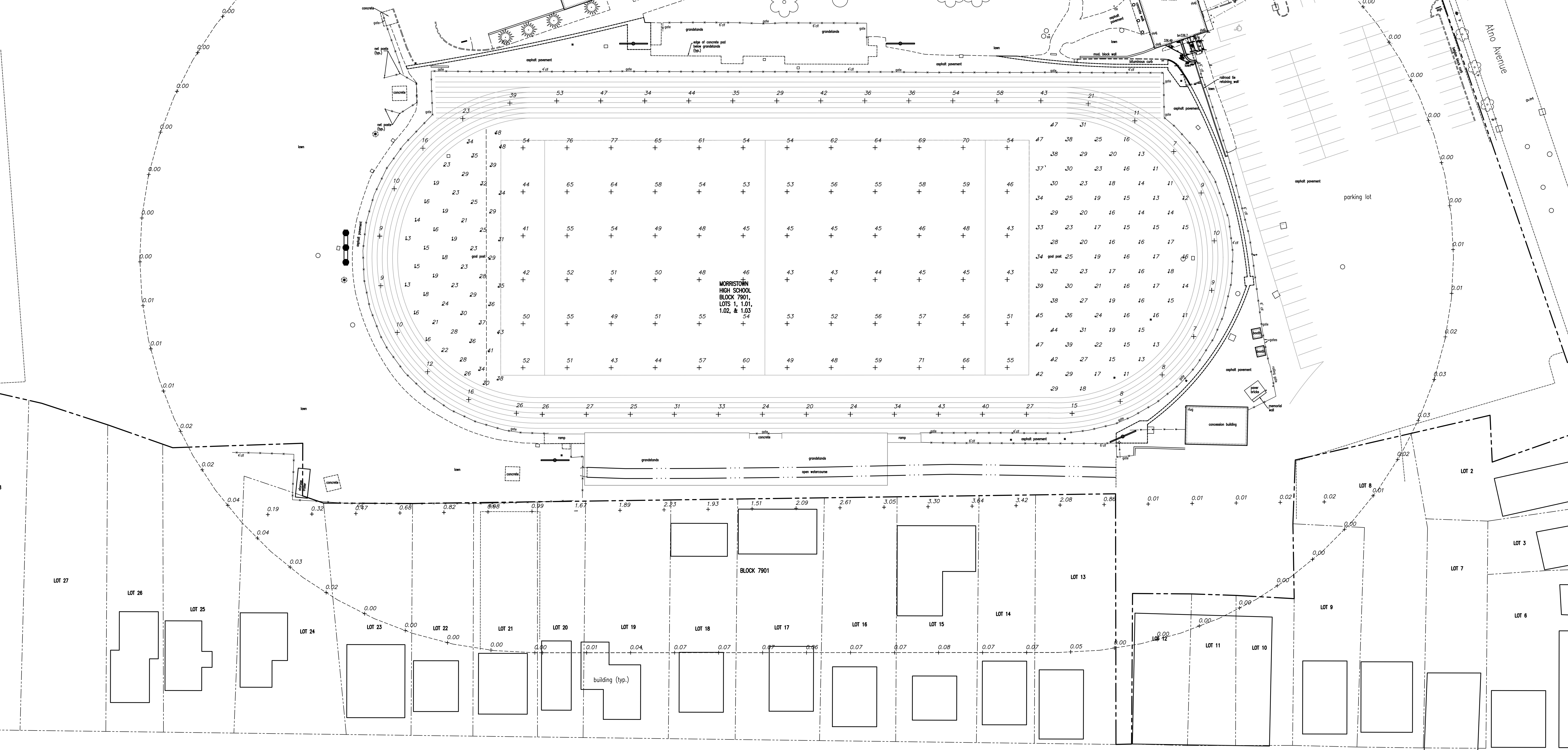
AWAY SIDE GRANDSTAND LIGHTING LEVELS



SYMBOL LIST

- LT# NEW SPORTS LIGHTING TOWER.
- 25 FOOTCANDLES 3 FEET ABOVE GRADE.

- NOTES:
1. THE LIGHTING LEVELS SHOWN ARE FROM MUSCO LED SPORTS LIGHTING SYSTEM.
 2. THERE ARE FOUR SPORTS LIGHTING TOWERS SHOWN.
 3. A NEW SCOREBOARD WITH DIGITAL DISPLAY IS PROPOSED AT THE WEST END OF THE FIELD. THE EXISTING SCOREBOARD WILL BE REMOVED.
 4. REFER TO DRAWING LP-2 FOR LIGHTING AND SCOREBOARD DETAILS.



PARETTE SOMJEN



ARCHITECTS
A LIMITED LIABILITY CORPORATION

439 Route 46 East
Rockaway, NJ 07866
Tel. 973.586.2400
Fax. 973.586.2401
www.planetPSA.com

NEW FIELD LIGHTING AND
SCOREBOARD FOR:
MORRISTOWN DISTRICT
MORRISTOWN HIGH SCHOOL
50 EARLY STREET
MORRISTOWN, NJ 07960
BLOCK: 7901 LOT: 1

STATE PROJ. NO. 27-3385-050-22-X000

Civil Engineering Consultant:

EDWARDS
Engineering Group, Inc.

Certificate of Authorization: 24GA28008000
P.O. Box 8437 • Somerville, NJ • 08876-8437
908.231.9595 Fax 908.231.9596

William B. Edwards 06-15-22
WILLIAM B. EDWARDS, P.E. Date
Professional Engineer NJ Lic. No. GE36148

REV	DATE	REMARK
0		

- | | |
|---------------------------|------------|
| □ Marc R. Parette, A.I.A. | 44264 |
| NCARB Registration | 10436 |
| New Jersey Architect | 024312 |
| New York Architect | 0147983B |
| Pennsylvania Architect | 10445 |
| Maryland Architect | 4881 |
| New Jersey Planner | 5996 |
| Alabama Architect | 6261 |
| Louisiana Architect | AR 93131 |
| Florida Architect | 1301053053 |
| Michigan Architect | 6311 |
| Nevada Architect | |
- | | |
|--------------------------------|-------------|
| □ Gregory J. Somjen, A.I.A. | 47178 |
| NCARB Registration | 13349 |
| New Jersey Architect | 9629 |
| Massachusetts Architect | 6616 |
| Delaware Architect | 0401 011210 |
| Virginia Architect | 9822 |
| Connecticut Architect | 032435-1 |
| New York Architect | 6280 |
| Nevada Architect | 101294 |
| District Of Columbia Architect | |
- | | |
|-------------------------------|--------------|
| □ David J. Didimamoff, A.I.A. | |
| New Jersey Architect | 21A101897500 |

SIGNATURE

LIGHTING LEVEL PLAN

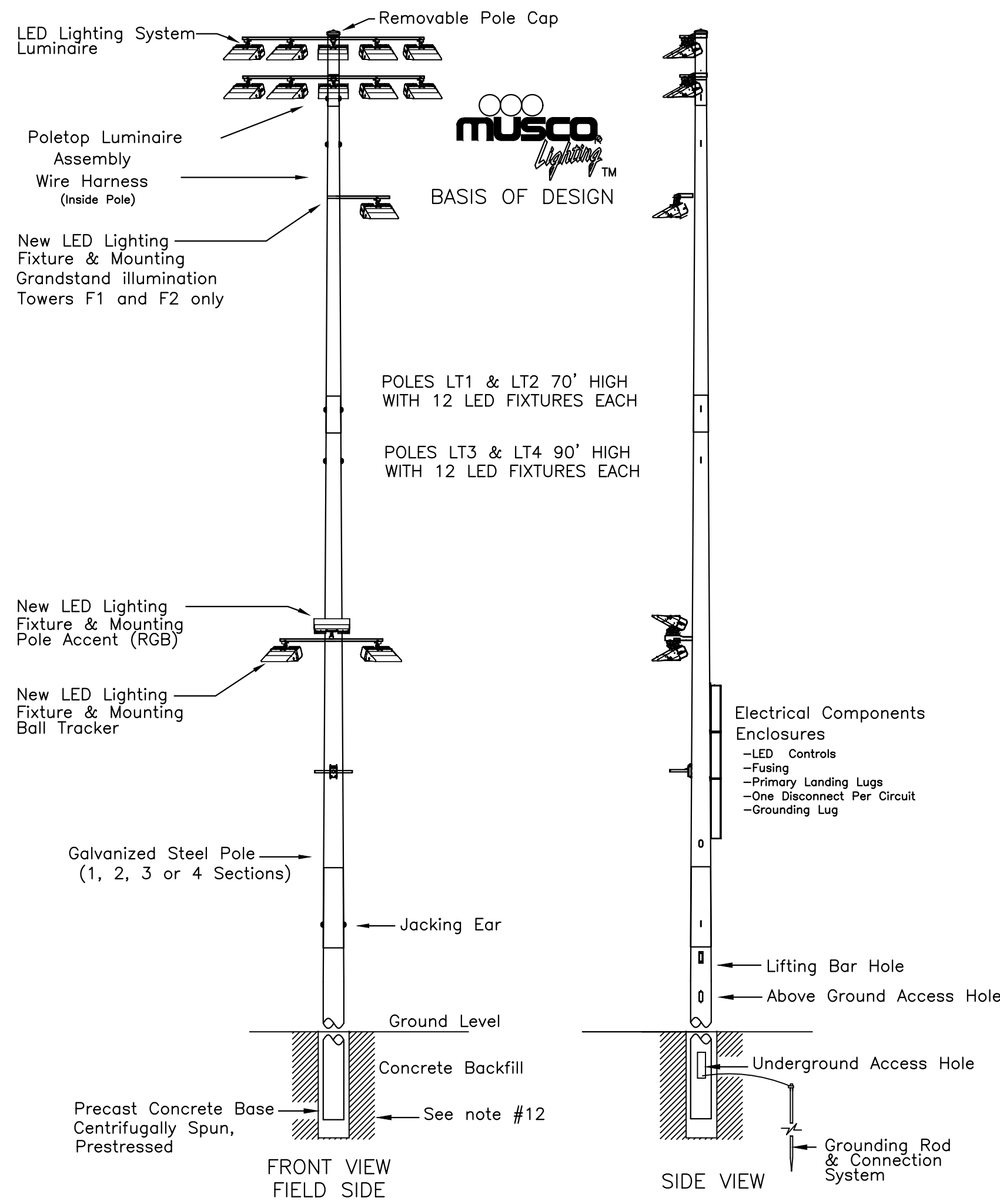
THE SCALE REPRESENTED ON THESE DRAWINGS IS ONLY VALID IF THE DRAWINGS ARE PLOTTED AT THE SPECIFIED SHEET SIZE AND PLOTTED AT THE SPECIFIED SHEET SIZE AND PLOTTED TO SCALE.

DD	SHEET NUMBER
SRP	LP-1
DRAWN BY	
9038	
PROJECT NUMBER	
16-JUNE-2022	
RELEASE DATE	© COPYRIGHT 2022 PARETTE SOMJEN ARCHITECTS, L.L.C.

Washington Street (County Road #510)

PROJECT OBJECTIVES:

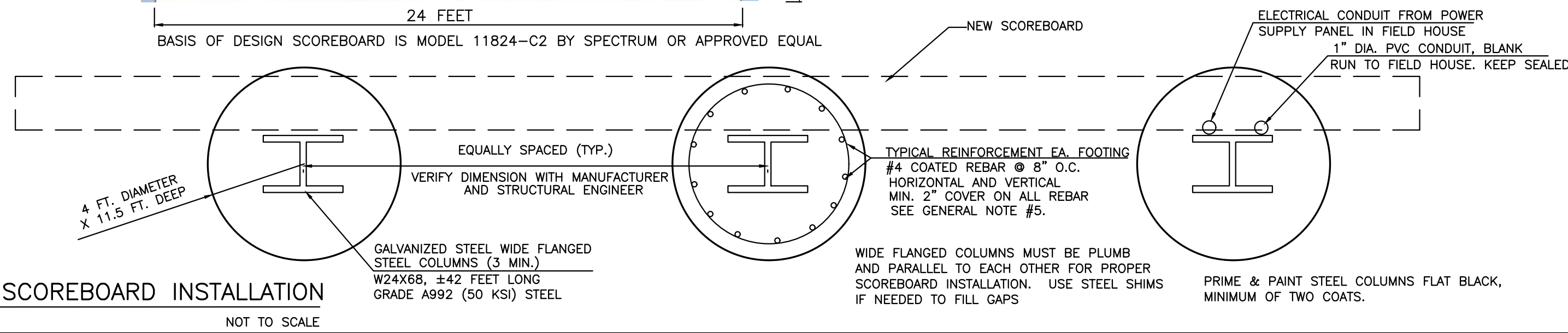
- 1.) THE BASIS OF DESIGN IS THE LED SPORTS LIGHTING SYSTEM WITH SPORTS LIGHTING CONTROLLER WITH THE MUSCO LED MULTI-LEVEL CONTROLLER WITH "CONTROL LINK" & LIGHT SHOW ENTERTAINMENT PACKAGE BY MUSCO SPORTS LIGHTING OR APPROVED EQUAL.
- 2.) THE PROJECT REQUIRES THE ILLUMINATION OF A NEW MULTI-PURPOSE ATHLETIC FIELD LOCATED WITHIN THE CONFINES OF THE EXISTING HIGH SCHOOL RUNNING TRACK. THE LIGHTING SYSTEM SHALL PROVIDE LED MULTI-LEVEL LIGHTING:
 - HIGH: 50 FOOT CANDLES OF ILLUMINATION
 - MEDIUM: 50% OUTPUT
 - LOW: 25% OUTPUT
- 3.) INCLUDE THE MUSCO MULTI-LEVEL CONTROLS.
- 4.) THE LOCATION OF THE LIGHTING TOWERS MAY DIFFER ACCORDING TO THE MANUFACTURER'S LAYOUT AND REQUIREMENTS. THE FINAL LOCATION OF ALL FOUR LIGHTING TOWERS MUST TAKE IN TO ACCOUNT THE LOCATION OF THE EXISTING SITE IMPROVEMENTS AND UNDERGROUND UTILITIES, THE CONDUITS, CONDUCTORS, AND HAND HOLES (PULL BOXES) SHALL BE FIELD ADJUSTED BASED UPON THE APPROVED FIELD LIGHTING SYSTEM.
- 5.) NO ADDITIONAL PAYMENT WILL BE MADE FOR EXTRA CONDUIT AND CONDUCTORS FOR THE FINAL LOCATION OF THE LIGHTING TOWERS. ANY DAMAGE TO THE EXISTING UNDERGROUND UTILITIES SHALL BE REPAIRED AT NO ADDITIONAL COST TO THE OWNER.
- 6.) LIGHTING SYSTEM SHALL HAVE A 25 YEAR WARRANTY ON ALL PARTS, EQUIPMENT, AND LIGHTING FIXTURES.



- INCLUDE ALL REQUIRED EQUIPMENT & PARTS FOR A COMPLETE INSTALLATION:**
- Sports lighting towers, lighting equipment, LED luminaires, wiring, ballasts, controls.
 - Site specific light tower foundation design shop drawing sealed by licensed structural engineer.
 - Additional mounting brackets on each tower for future PA speakers and security cameras.
 - Grounding rods and connection to system grounding lug
 - All conductors and grounding conductors between the light poles, and contactors, including contactors, controllers, and control cabinets.
 - Concrete backfill around light tower bases
 - Conductors and grounding conductors from each handhole to the electrical component enclosure on each pole.
 - Service entrance equipment.

- NOTES:**
1. THIS DRAWING DEPICTS A TYPICAL 70 TO 90 FOOT HIGH LIGHT POLE WITH LIGHTING ARRAY AND IS NOT TO SCALE. REFER TO THE CONSTRUCTION PLANS FOR THE HEIGHT OF INDIVIDUAL LIGHTING TOWERS.
 2. DIMENSIONS ARE SHOWN FOR REFERENCE ONLY. VARIANCES MAY OCCUR DEPENDING ON STEEL POLE TOLERANCES, CONCRETE TOLERANCES, GALVANIZING THICKNESS, HOLE DEPTH ACCURACY.
 3. MUSCO PROVIDES A BASE INSTALLATION BAR, AN INSTALLATION LEVEL MODIFIED FOR TAPER, AND INSTALLATION WEDGES.
 4. FURNISH NEW HANDHOLES AND CONDUITS AS NEEDED.
 5. BASIS OF DESIGN INFORMATION IS FOR MUSCO LED SPORTS LIGHTING SYSTEM. PATENTS ISSUED AND PENDING.
 6. ALL CONDUCTORS SHOULD RUN CONTINUOUSLY BETWEEN CONTACTORS AND THE ELECTRICAL COMPONENT ENCLOSURE ON EACH POLE. SPICES SHALL BE KEPT TO AN ABSOLUTE MINIMUM.
 7. GROUNDING CONDUCTOR WIRE GAGE MAY BE REDUCED, IF PERMITTED BY THE LOCAL ELECTRICAL SUBCODE OFFICIAL, PER NEC REQUIREMENTS.
 8. WIRE GAGES SHOWN ON THE PANELBOARD SCHEDULE ARE BASED UPON A MAXIMUM 3% VOLTAGE DROP TO THE MOST REMOTE LUMINAIRE. ALL WIRE GAGES SHOWN ARE CONSIDERED MINIMUM AND SHALL BE ADJUSTED TO SUIT ACTUAL FIELD CONDITIONS.
 9. EACH SPORTS LIGHTING TOWER SHALL HAVE ADDITIONAL CONDUITS FOR SECURITY CAMERAS AND LOUD SPEAKERS. SEE SHEETS C-4.0 FOR CONDUIT & HAND HOLE LOCATIONS.
 10. ALL LIGHT TOWERS SHALL HAVE ADDITIONAL MOUNTING BRACKETS FOR SECURITY CAMERAS AND LOUDSPEAKERS, INCLUDING A BLANK DATA/SECURITY CONDUIT FROM THE TOWER TO THE NEAREST DATA HAND HOLE. COORDINATE WITH THE OWNER ON THE LOUDSPEAKER AND CAMERA EQUIPMENT, SO COMPATIBLE MOUNTING BRACKETS CAN BE FACTORY WELDED TO EACH TOWER AT THE REQUIRED HEIGHT(S). INCLUDE THIS COORDINATION DURING THE SUBMITTAL REVIEW PROCESS.
 11. THE CONTRACTOR SHALL ENGAGE THE SERVICES OF A LICENSED NJ PROFESSIONAL STRUCTURAL ENGINEER AND A LICENSED NJ PROFESSIONAL GEOTECHNICAL ENGINEER TO DESIGN SITE SPECIFIC FOOTINGS FOR THE LIGHTING TOWERS. INCLUDE ALL TECHNICAL AND MANAGERIAL COSTS IN THE BASE BID.
 12. FOUNDATIONS SHALL BE DESIGNED BASED UPON POOR (BC CLASS 5) SOIL FILL CONDITIONS, UNLESS THE CONTRACTOR ENGAGES A LICENSED GEOTECHNICAL ENGINEER TO PERFORM SOIL TESTING IN THE SPECIFIC LIGHT TOWER LOCATIONS. IN THAT EVENT, THE FOUNDATIONS MAY BE DESIGNED BASED UPON LOCALIZED SOIL CONDITIONS. THE FOOTING SHOWN ARE FOR REFERENCE AND BIDDING PURPOSE ONLY.

1 SPORTS LIGHTING TOWERS
NOT TO SCALE



2 SCOREBOARD INSTALLATION
NOT TO SCALE

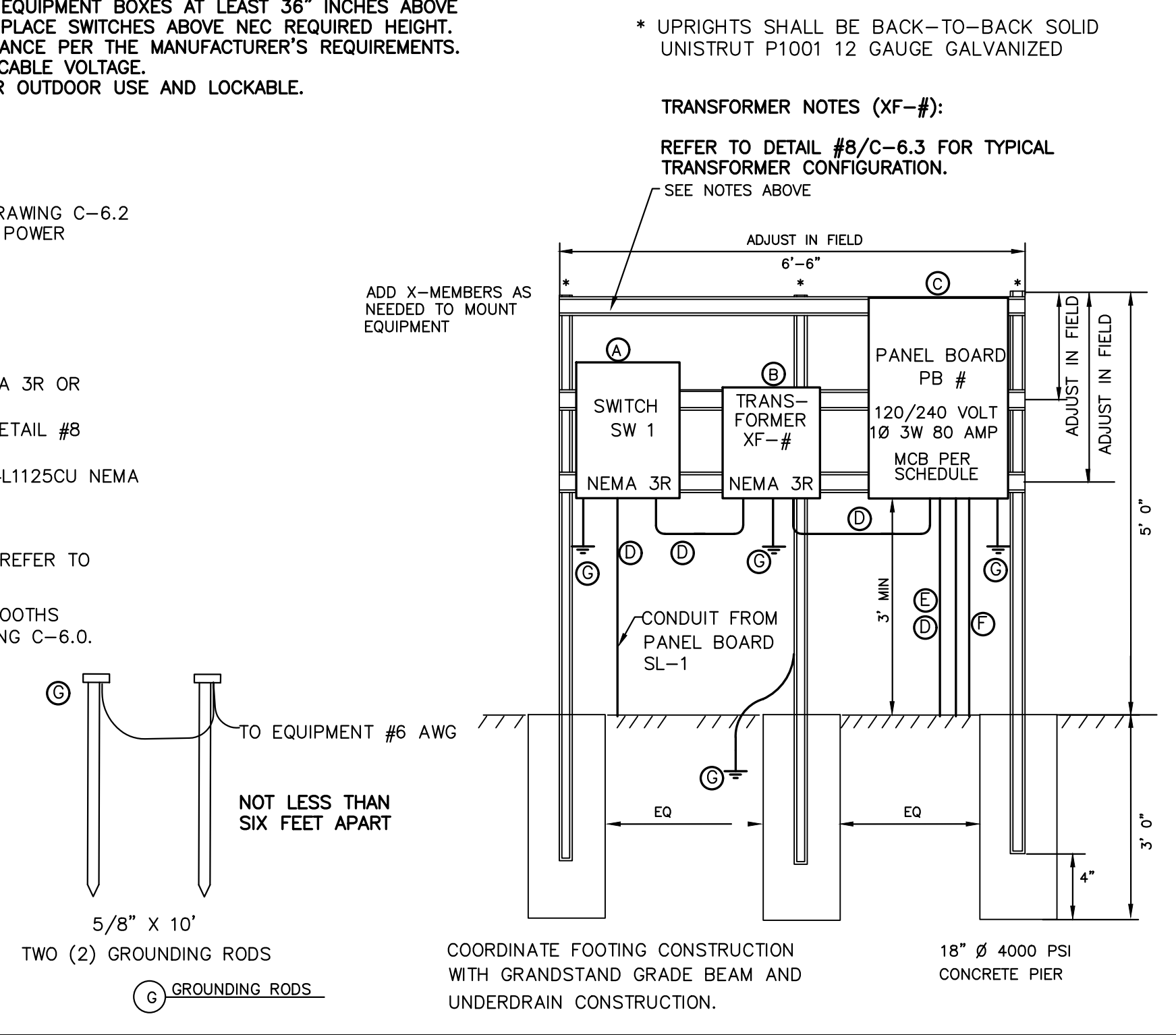
- NOTES:**
- 1.) MOUNT EQUIPMENT AND CONDUITS TO FREESTANDING GALVANIZED UNISTRUT P1000 AND P1001 12 GAUGE FRAME USE, ONLY GALVANIZED HARDWARE, (OR APPROVED EQUAL) IN A WORKMANLIKE MANNER.
 - 2.) ADJUST DIMENSIONS OF FRAME TO ACCOMMODATE ACTUAL SIZE OF EQUIPMENT AND MANUFACTURER'S RECOMMENDED MOUNTING LOCATIONS.
 - 3.) WHENEVER POSSIBLE SET THE BOTTOM OF ALL EQUIPMENT BOXES AT LEAST 36" INCHES ABOVE GRADE. BUT IN NO CASE SHALL MOUNTING HEIGHT PLACE SWITCHES ABOVE NEC REQUIRED HEIGHT.
 - 4.) TRANSFORMERS MUST BE MOUNTED WITH CLEARANCE PER THE MANUFACTURER'S REQUIREMENTS.
 - 5.) EQUIPMENT SHALL BE LABELED WITH THE APPLICABLE VOLTAGE.
 - 6.) ALL EQUIPMENT SHALL BE NEMA-3R RATED FOR OUTDOOR USE AND LOCKABLE.

- FENCE GROUNDING NOTES:**
1. SEE FENCE GROUNDING NOTES IN DETAIL #9/ DRAWING C-6.2 FOR FENCING THAT IS INSTALLED AROUND REMOTE POWER DISTRIBUTION EQUIPMENT.

- Ⓐ SWITCH: HUBBELL SQUARE D HJ261R NEMA 3R OR APPROVED EQUAL.
- Ⓑ TRANSFORMER: REFER TO SCHEDULE ON DETAIL #8 DWG C-6.3.
- Ⓒ PANEL BOARD: GENERAL ELECTRIC PW1224L1125CU NEMA 3R OR APPROVED EQUAL.
- Ⓓ GALVANIZED STEEL RMC TYP.
- Ⓔ CONDUIT AND POWER FEED TO PEDESTAL. REFER TO DRAWING C-6.0 & DETAIL #3/C-6.2
- Ⓕ CONDUITS AND POWER FEEDS TO TICKET BOOTHS VIA HAND HOLES & CONDUITS. SEE DRAWING C-6.0.

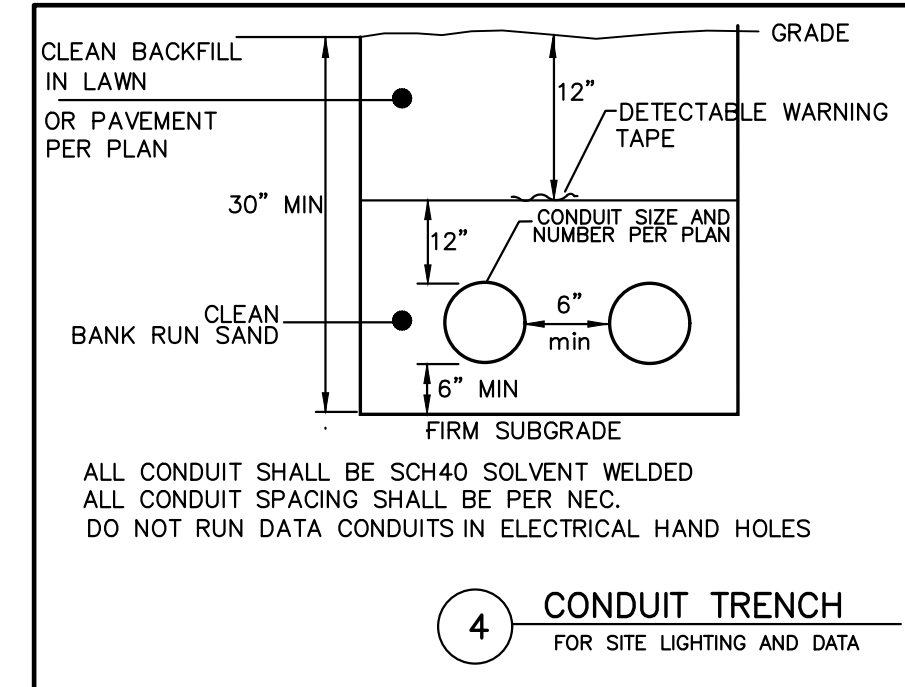
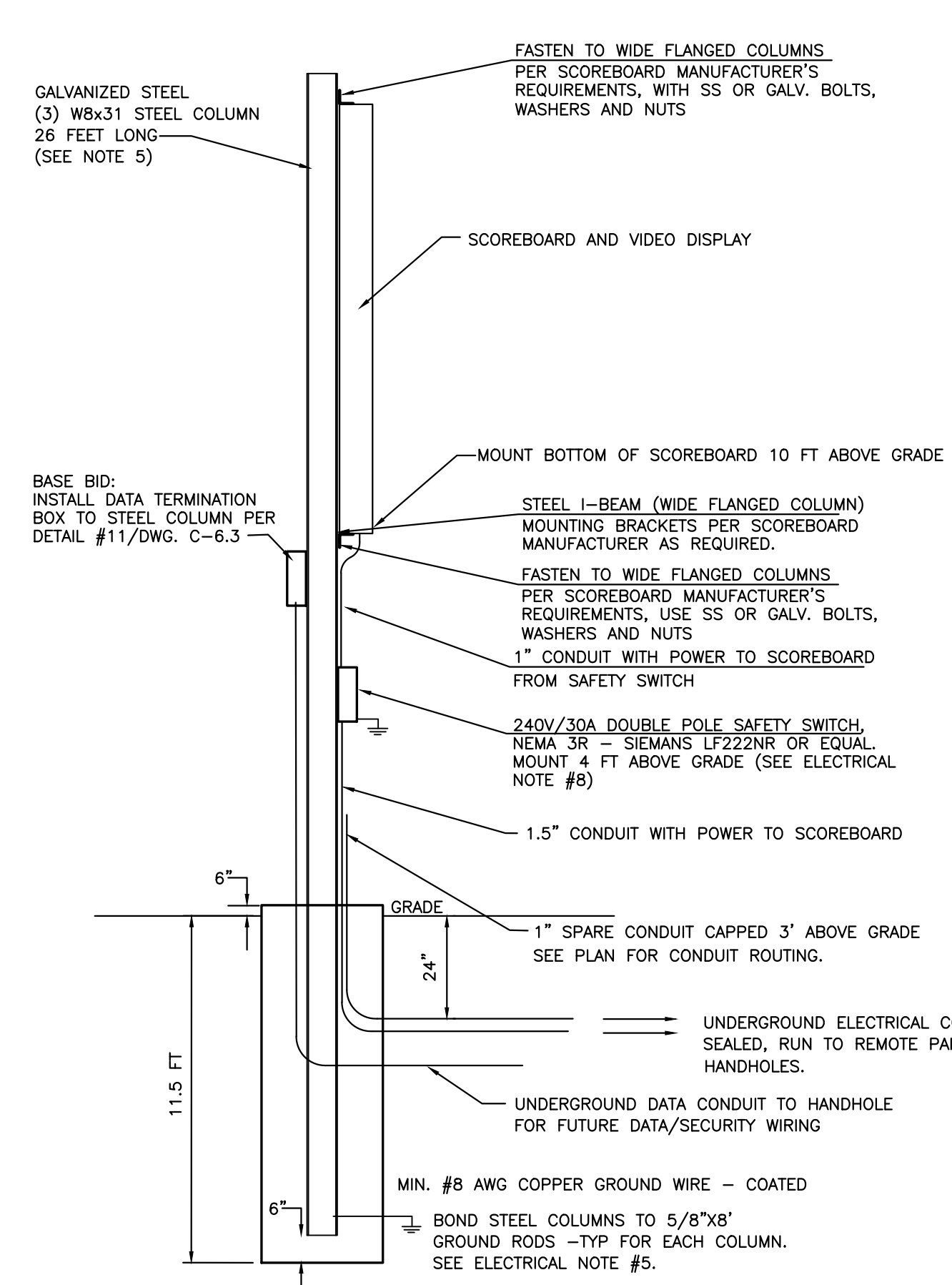
GROUND EQUIPMENT ACCORDING TO NEC LATEST EDITION AS SUPPLEMENTED BY LOCAL CODE REQUIREMENTS.

3 REMOTE POWER DISTRIBUTION
NOT TO SCALE



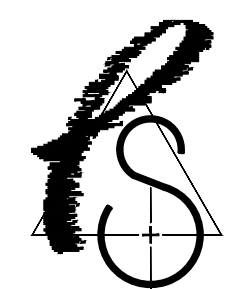
- GENERAL NOTES:**
1. OBTAIN EQUIPMENT MANUFACTURER'S INSTALLATION REQUIREMENTS AND ADHERE TO ALL REQUIREMENTS, UNLESS LOCAL CODES DICTATE OTHERWISE.
 2. ALL CONCRETE SHALL BE 4000 PSI PORTLAND CEMENT, AIR-ENRICHED.
 3. ALL CONDUITS ABOVE GRADE SHALL BE GALVANIZED STEEL. CONDUITS BELOW GRADE MAY BE PVC. ALL CONDUITS MUST BE WATER-TIGHT.
 4. RECOMMENDED CONDUIT SIZES ARE SHOWN AND SHALL BE ADJUSTED BASED UPON FINAL INSTALLATION AND NEC REGULATIONS.
 5. ALL CONDUITS ABOVE GRADE SHALL BE GALVANIZED STEEL. CONDUITS BELOW GRADE MAY BE PVC. ALL CONDUITS MUST BE WATER-TIGHT. REFER TO CONDUIT TRENCH DETAIL.
 6. RECOMMENDED CONDUIT SIZES ARE SHOWN AND SHALL BE ADJUSTED BASED UPON FINAL INSTALLATION AND NEC REGULATIONS.
 7. PROVIDE SEPARATE BONDING AND GROUND RODS FOR EACH STEEL COLUMN. MINIMUM #6 AWG COPPER GROUND WIRE.
 8. SECURE ALL CONDUITS TO STEEL COLUMN USING HEAVY DUTY CONDUIT CLAMPS AT 24" MAX SPACING.
 9. ELECTRICAL WORK SHOWN, INCLUDING CONDUITS, WIRING AND GROUNDING UP TO AND INCLUDING THE 240 VAC/3ØA 2 POLE SAFETY SWITCH IS PART OF THE BID.

- ELECTRICAL NOTES:**
1. ALL ELECTRICAL WORK SHALL BE PERFORMED BY LICENSED ELECTRICIANS. ALL WORK SHALL CONFORM TO THE NATIONAL ELECTRICAL CODE (NEC).
 2. ALL EQUIPMENT SHALL BE BONDED PER NEC AND LOCAL CODE REQUIREMENTS.
 3. ALL CONDUITS ABOVE GRADE SHALL BE GALVANIZED STEEL. CONDUITS BELOW GRADE MAY BE PVC. ALL CONDUITS MUST BE WATER-TIGHT. REFER TO CONDUIT TRENCH DETAIL.
 4. RECOMMENDED CONDUIT SIZES ARE SHOWN AND SHALL BE ADJUSTED BASED UPON FINAL INSTALLATION AND NEC REGULATIONS.
 5. PROVIDE SEPARATE BONDING AND GROUND RODS FOR EACH STEEL COLUMN. MINIMUM #6 AWG COPPER GROUND WIRE.
 6. SECURE ALL CONDUITS TO STEEL COLUMN USING HEAVY DUTY CONDUIT CLAMPS AT 24" MAX SPACING.
 7. ELECTRICAL WORK SHOWN, INCLUDING CONDUITS, WIRING AND GROUNDING UP TO AND INCLUDING THE 240 VAC/3ØA 2 POLE SAFETY SWITCH IS PART OF THE BID.



4 CONDUIT TRENCH
FOR SITE LIGHTING AND DATA

PARETTE SOMJEN



ARCHITECTS
A LIMITED LIABILITY CORPORATION

439 Route 46 East
Rockaway, NJ 07866
Tel. 973.586.2400
Fax. 973.586.2401
www.planetPSA.com

NEW FIELD LIGHTING AND SCOREBOARD FOR:
MORRIS SCHOOL DISTRICT
MORRISTOWN HIGH SCHOOL
50 EARLY STREET
MORRISTOWN, NJ 07960
BLOCK: 7901 LOT: 1

STATE PROJ. NO. 27-3385-050-22-X000

Civil Engineering Consultant:

EDWARDS
Engineering Group, Inc.

Certificate of Authorization: 24GA28008000
P.O. Box 9437 • Somerville, NJ • 08876-9437
908.231.9595 Fax 908.231.9596

William B. Edwards 06-15-22
WILLIAM B. EDWARDS, P.E. Date
Professional Engineer NJ Lic. No. GE36148

REV	DATE	REMARK
□		Marc R. Parette A.L.A. 44264 NCARB Registration New Jersey Architect 10436 New York Architect 024312 Pennsylvania Architect 0147983 Maryland Architect 10445 New Jersey Planner 4981 Alabama Architect 5996 Louisiana Architect 6261 Florida Architect AR 93131 Michigan Architect 1301053053 Nevada Architect 6311
□		Gregory J. Somjen A.L.A. 47178 NCARB Registration New Jersey Architect 13349 Massachusetts Architect 9629 Delaware Architect 6616 Virginia Architect 0401 011210 Connecticut Architect 8622 New York Architect 032435-1 Nevada Architect 6280 District Of Columbia Architect 101294
□		David J. Didimamoff, A.L.A. New Jersey Architect 21A01897500

SIGNATURE

DETAILS

THE SCALE REPRESENTED ON THESE DRAWINGS IS ONLY VALID IF THE DRAWINGS ARE PLOTTED AT THE SPECIFIED SHEET SIZE AND PLOTTED AT THE SPECIFIED SHEET SIZE AND PLOTTED TO SCALE.

DD	SHEET NUMBER
SRP	LP-2
DRAWN BY	
9038	
PROJECT NUMBER	
16-JUNE-2022	
RELEASE DATE	